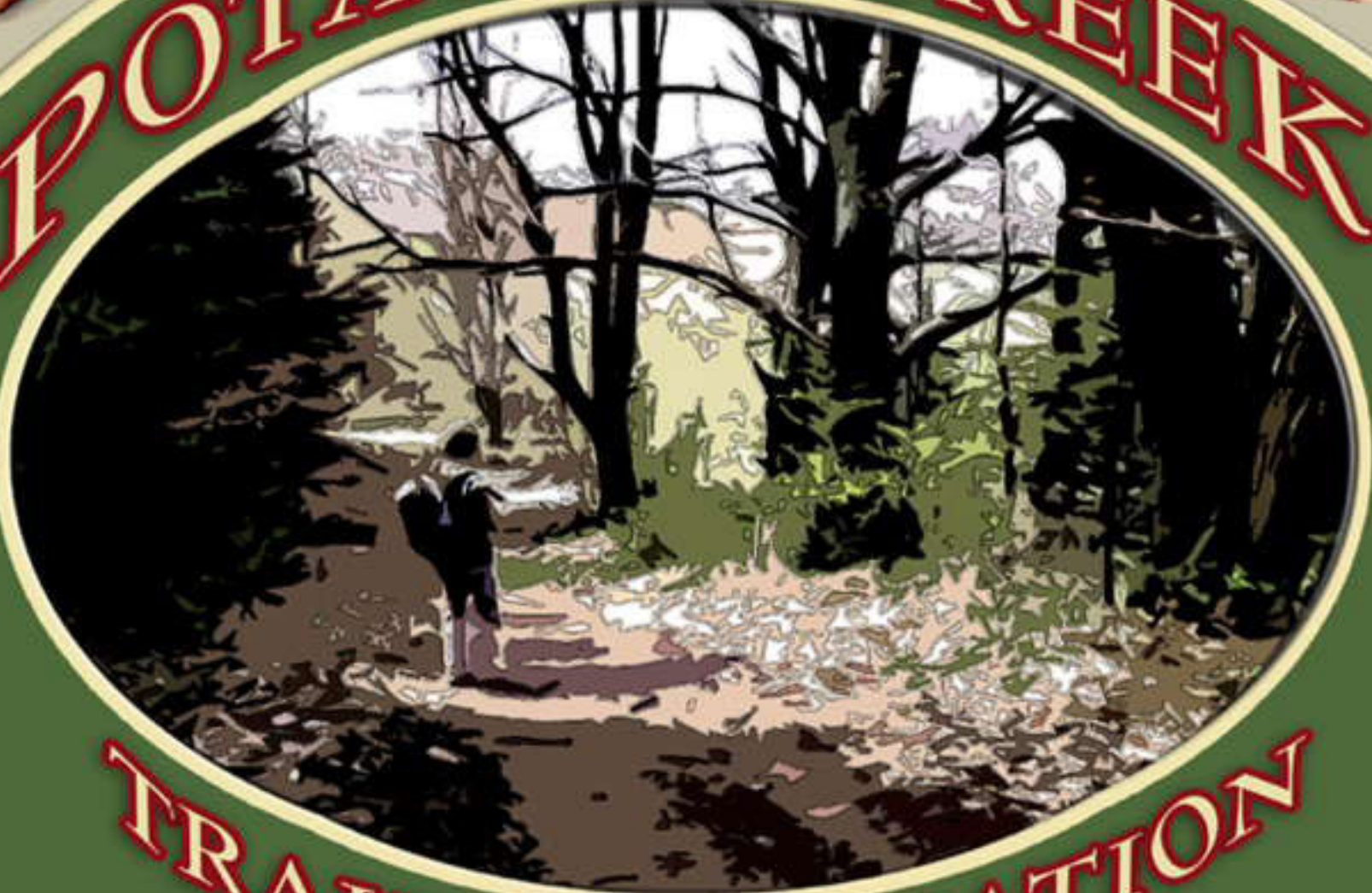




POTATO CREEK



TRAIL ASSOCIATION



Potato Creek Trail Association

The Potato Creek Trail Association formed in 2007 to create a system of recreational trails around Smethport. Trails include opportunities for hiking, mountain biking, canoeing, horseback riding and cross-country skiing. No motorized activities on the trails are allowed.

The trail system features routes along old railroad grades which were abandoned long ago, logging roads, park paths and down scenic waterways such as Marvin Creek and Potato Creek which flow into the Allegheny River and into New York State.

The Wolfinger Trail System travels the hillside and big level on the north hill above Smethport. There are additional trails leading off of the main trail, "Sandy Lane," in several directions. An overlook of Smethport is visible from one of these trails.

The old Shawmut Railroad and Bradford, Bordell and Kinzua Railroad grades offer easy hiking or cross country skiing opportunities. And the old Pennsylvania R.R. grade leading out of East Smethport offers an excellent equestrian trail that joins with the Wolfinger Trail System.

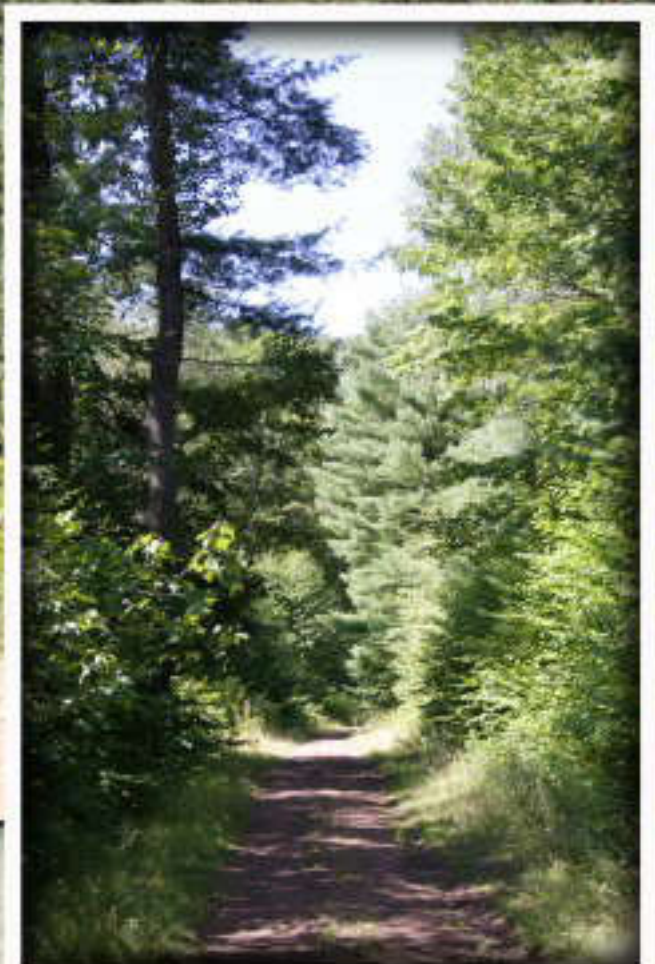
Hamlin Lake Park provides the scenic "Goosechaser Trail" along quiet Marvin Creek and through the park along Hamlin Lake.

Water trails for canoe and kayak enthusiasts are being developed along Marvin Creek, Potato Creek and the Allegheny River from Port Allegany north to New York State.

Members of the Potato Creek Association will add trail markers and trail improvements in the near future.

Beautiful scenery is prominent on each trail and waterway.

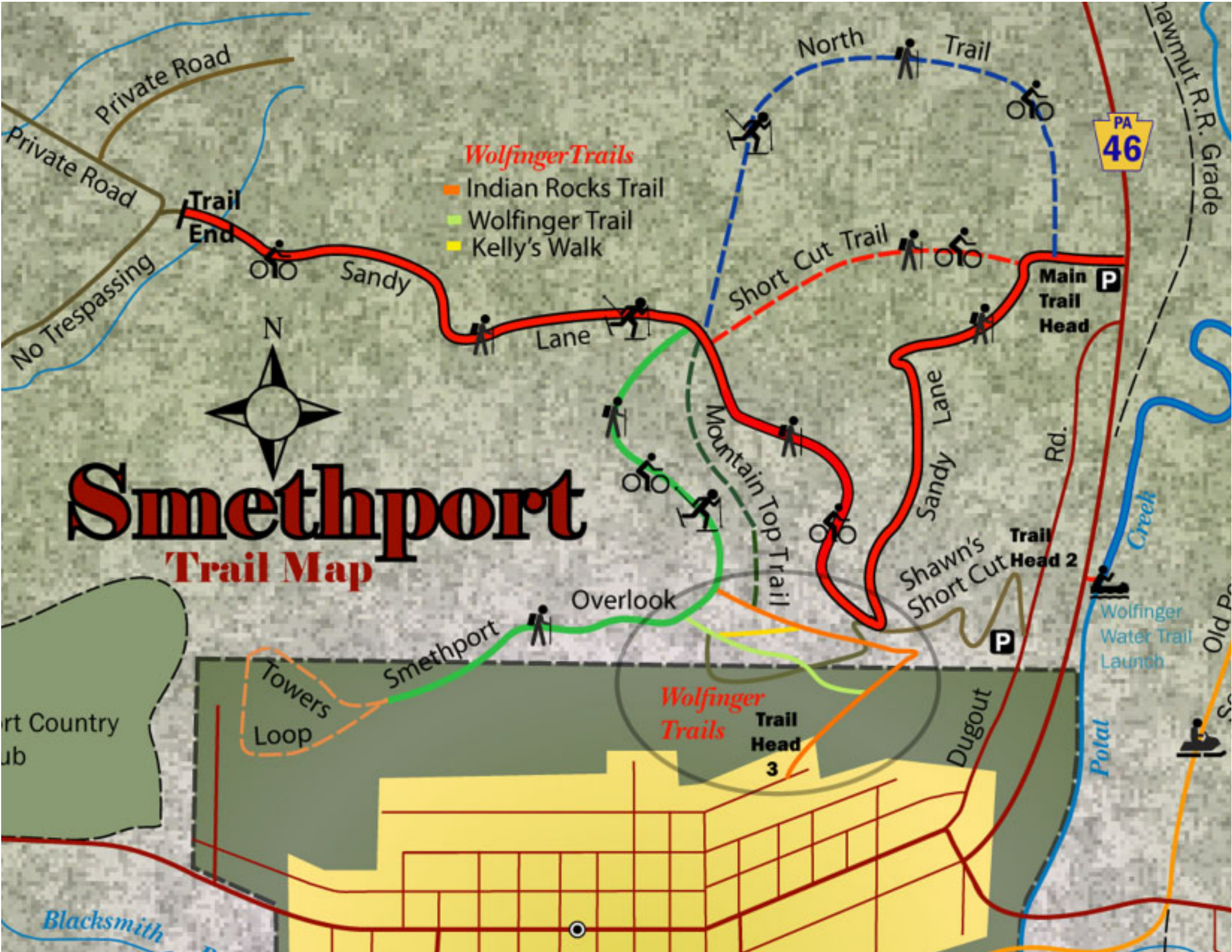
The Trail Association requests that you use the trail responsibly and show proper respect for private property.



**A view of “Sandy Lane” near the Main Trail Head
on PA Route 46 north of Smethport.**

Smethport Trail Map

- Wolfinger Trails**
- Indian Rocks Trail
 - Wolfinger Trail
 - Kelly's Walk



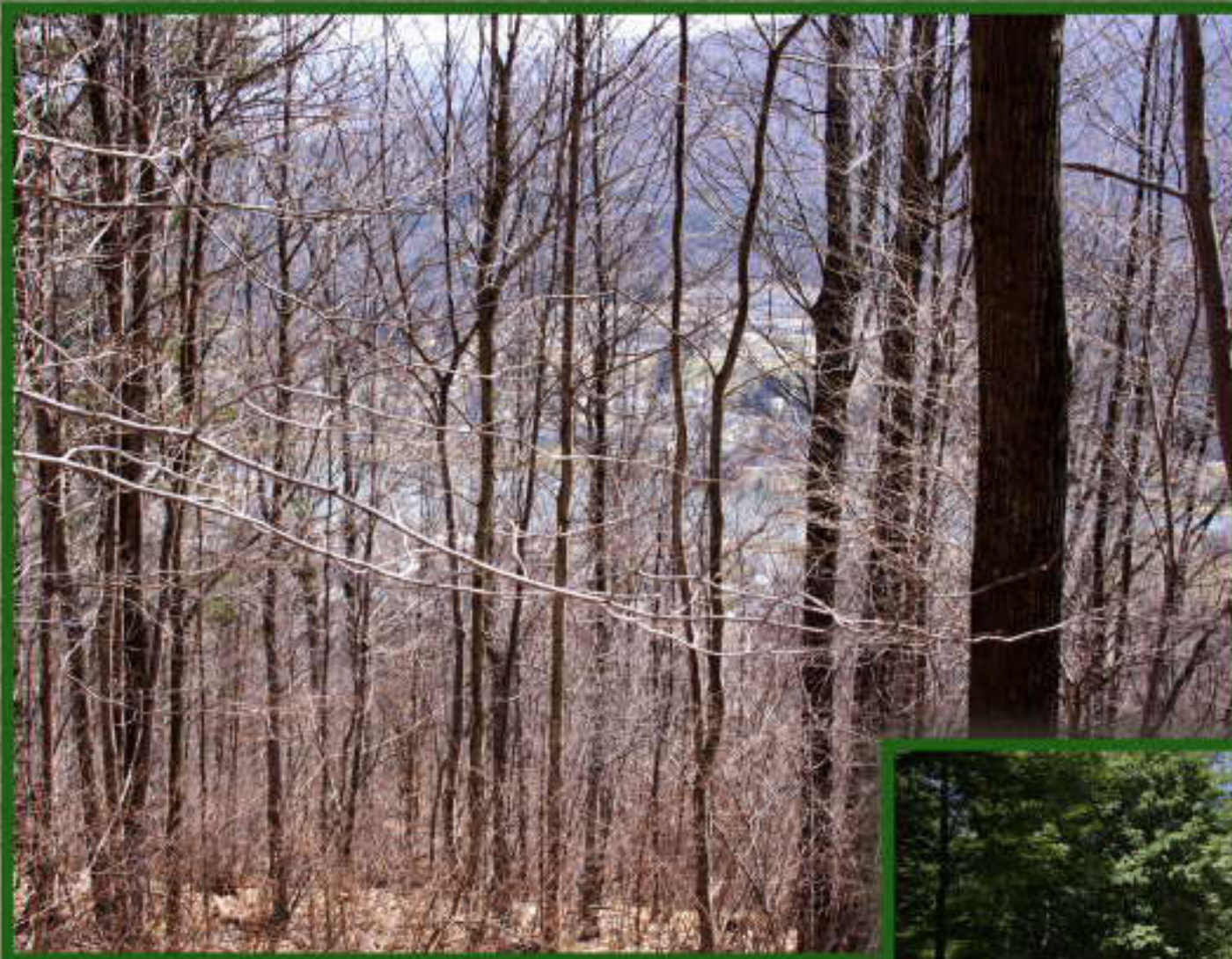


A view of the switch-back on “Sandy Lane” and a hiker on “Shawn’s Shortcut.” The shortcut joins with “Sandy Lane” for a short distance at this point.



“Shawn’s Shortcut” begins on the Dugout Road that was once US Route 6 and serves as Trail Head #2. The path snakes up the hillside to join “Sandy Lane” at the sharp switch-back. The “shortcut” is a quick, but much steeper way to climb the hill to the Smethport Overlook north of the borough.





Hamlin Lake and Smethport Area High School are visible from the “Smethport Overlook Trail.”

Below is a photo near the end of “Sandy Lane” on the big level north-west of Smethport.



Sandy Lane serves as part of the equestrian trail network and connects with the Pennsy Grade Equestrian Trail through East Smethport. Other trails on the Wolfinger System are also open for equestrian usage



Photo By: Nancy Dart



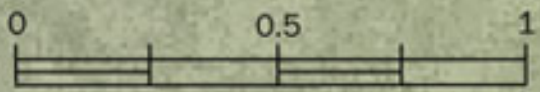
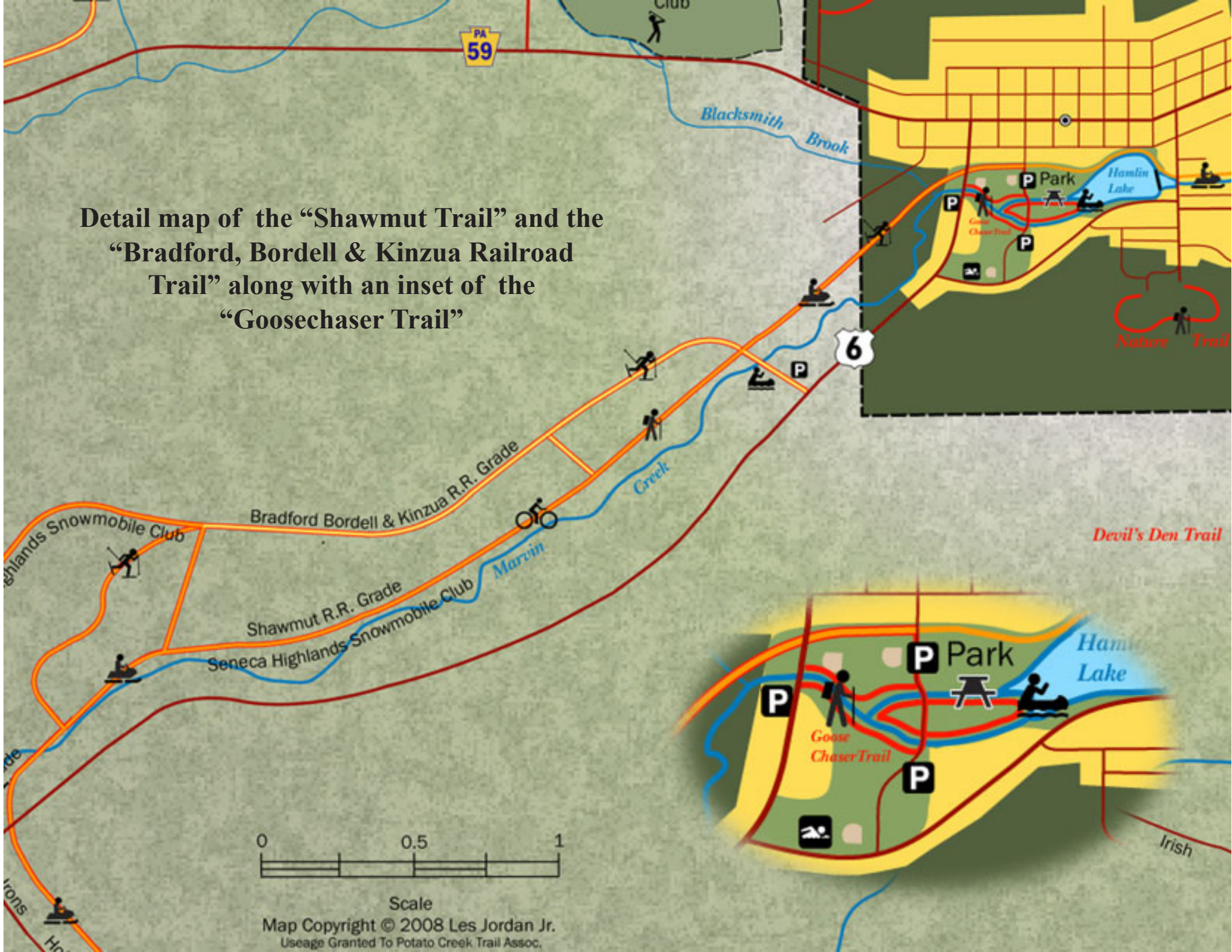
The North Trail branches off of Sandy Lane into a big loop. Scenery on the trail offers a view of the Honeywell Wax Industry at Farmers Valley over three miles away and the rolling ridge tops south of Smethport. Plentiful thimbleberries attract black bear to the area and other wildlife are plentiful along the way.





The “Goosechaser Trail” wanders through Hamlin Lake Park and offers beautiful scenery and excellent bird-watching, fishing, and other recreational opportunities.

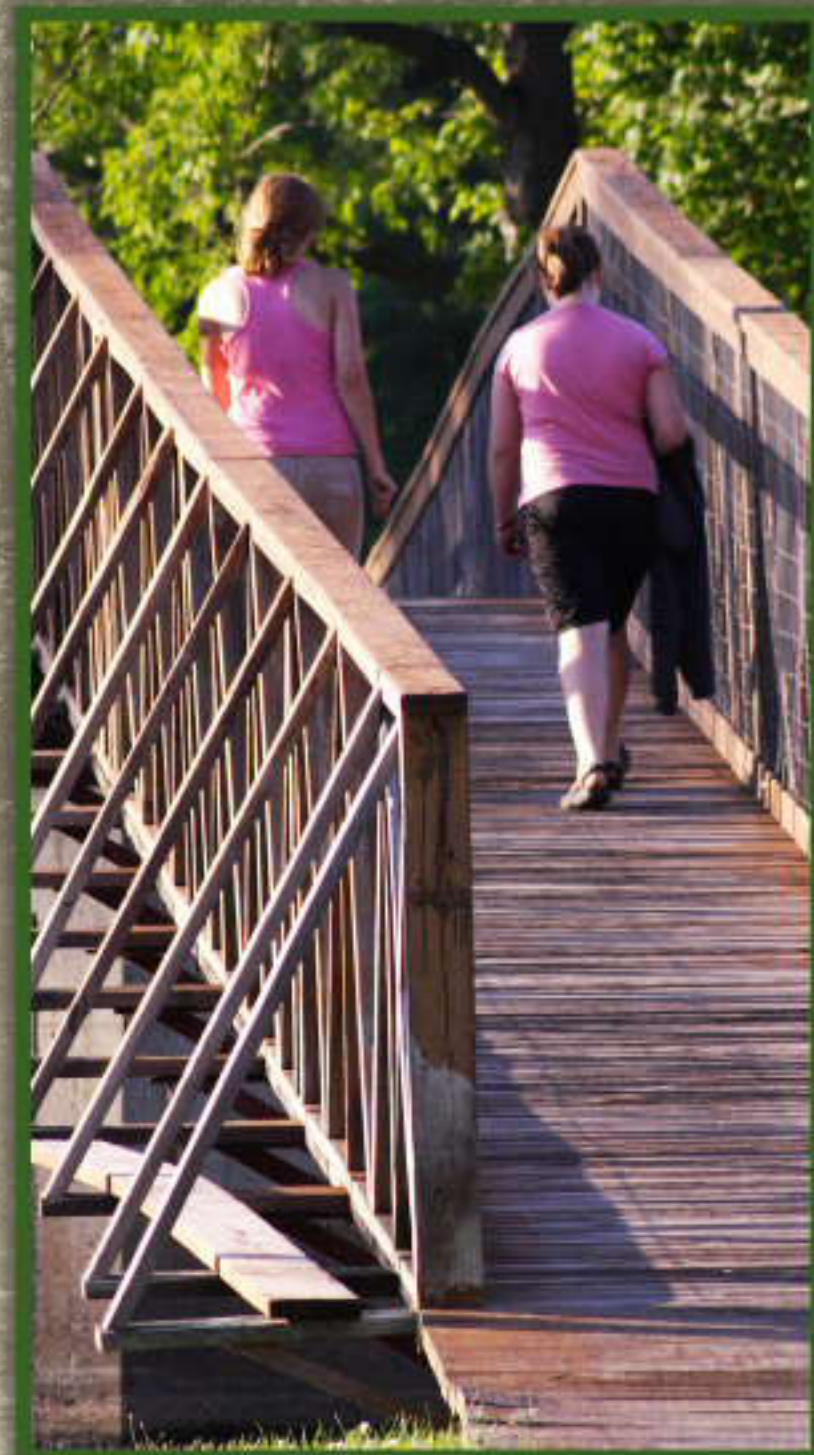
Detail map of the “Shawmut Trail” and the “Bradford, Bordell & Kinzua Railroad Trail” along with an inset of the “Goosechaser Trail”



Scale
Map Copyright © 2008 Les Jordan Jr.
Usage Granted To Potato Creek Trail Assoc.



Seen on this page are various views of "Goosechaser Trail."





The "Shawmut Grade" (left and below left) allows cross-country skiing, hiking and mountain biking. The trail offers easy access to Marvin Creek and trout fishing during season. The "Bradford, Bordell & Kinzua Trail" runs higher up the side hill and parallels the Shawmut grade down in the Marvin Creek Valley.

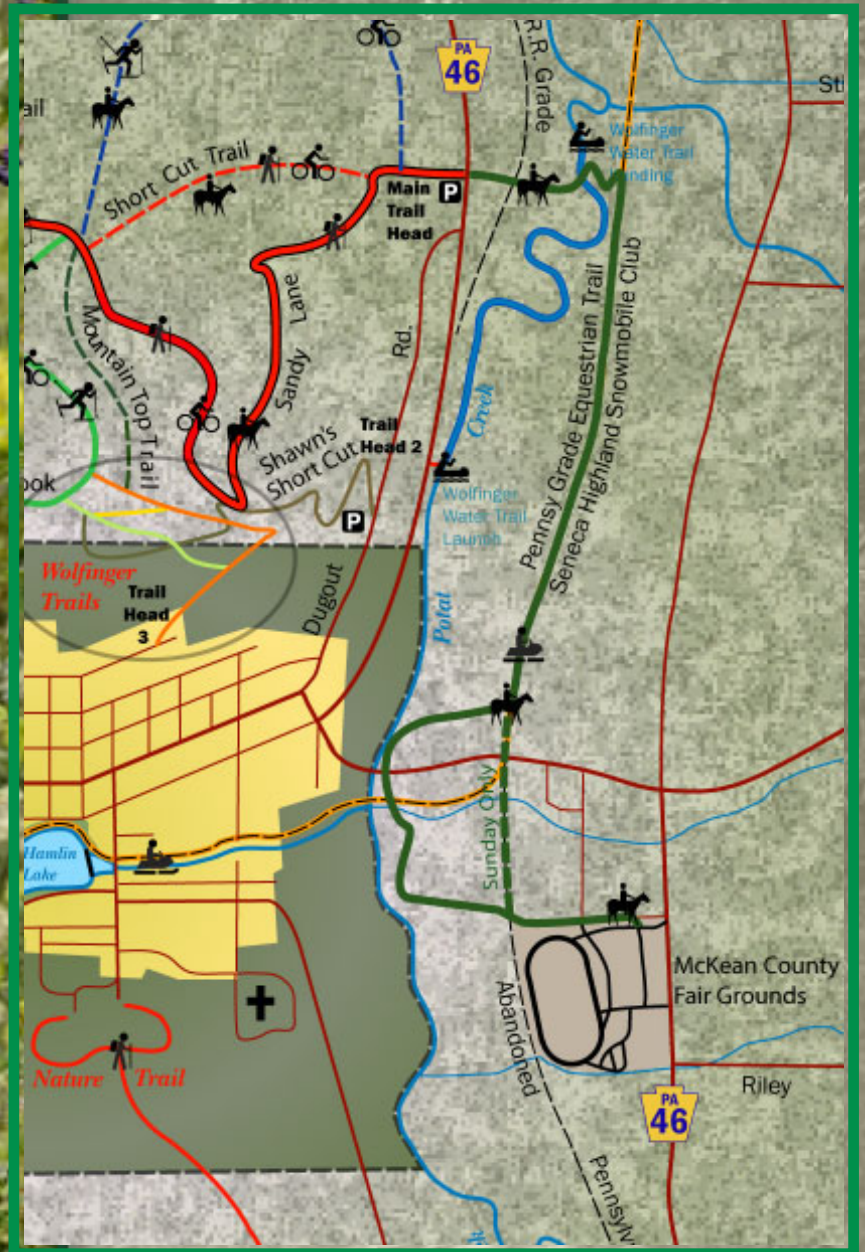




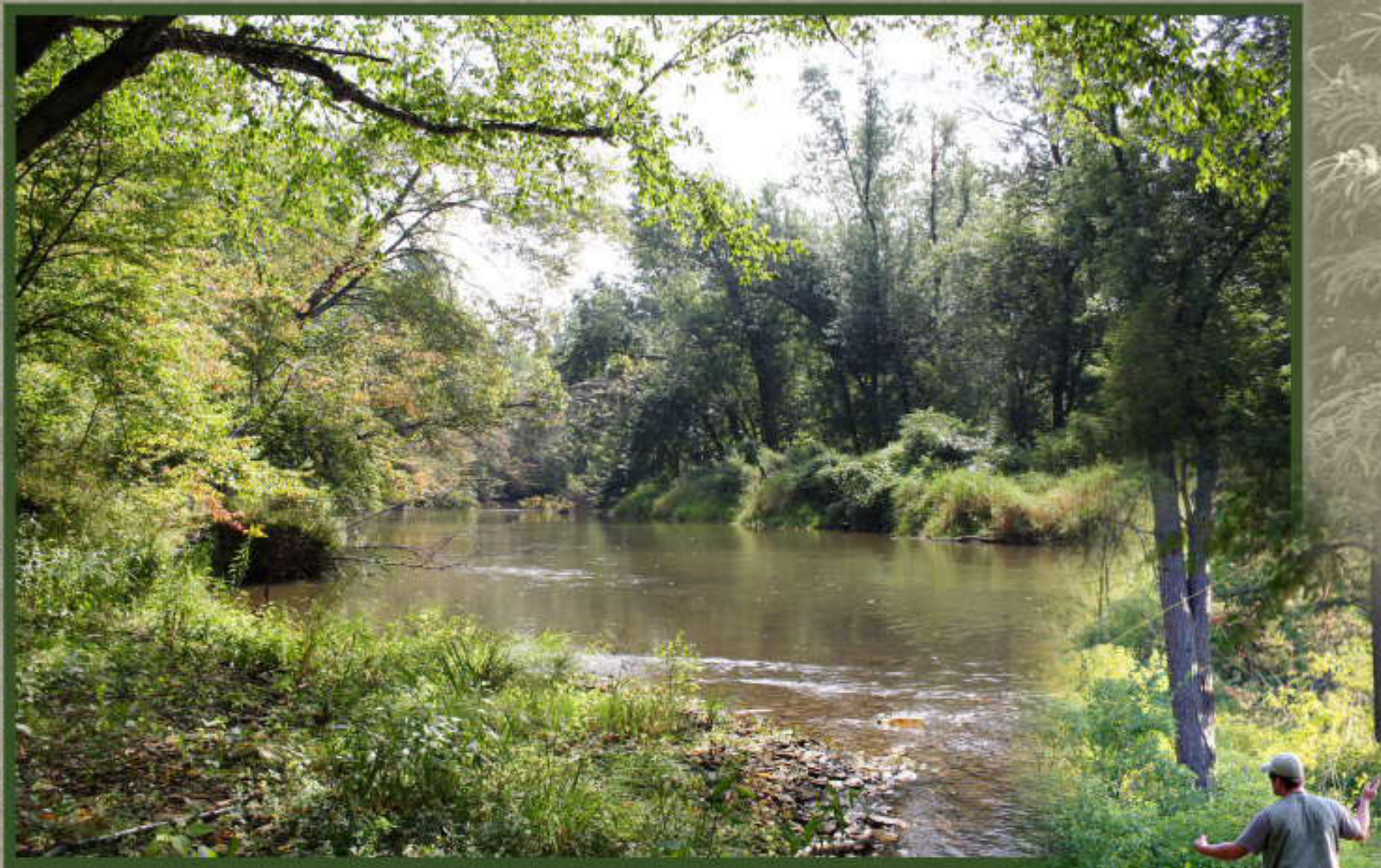
The “Shawmut Trail” begins on US Route 6 adjacent to the Chet Burt Little League Field and travels south-west along Marvin Creek. The trail offers a scenic view for mountain bikers, hikers and fishermen. The “Shawmut Trail” provides an access road to the “Bradford, Bordell & Kinzua Trail” which was once a narrow gauge railroad to Bradford and Mount Jewett. Abundant wildlife can be seen along these trails during all seasons.



The “PennsyTrail” once brought passengers to East Smethport via the Pennsylvania R.R.. It now serves as an equestrian trail. The trail begins at the McKean County Fair Grounds where riders can board their horses and travel northward up the Pennsy grade to cross Marvin Creek and connect with the Wolfinger Trail System.



Teenagers use the “Pennsy Trail” for bike riding.



Potato Creek flows into the Allegheny River at Larabee. It offers a scenic boat ride and some of the best fishing in the area.



**Marvin Creek's slow current is just right for a slow canoe trip on a warm, summer day.
Fishermen are drawn to the stream as a favorite fishing spot.**



Hamlin Lake Park is a beautiful spot to kayak or just relax and fish in the quiet evening when the waters are still and reflect the surrounding hills.